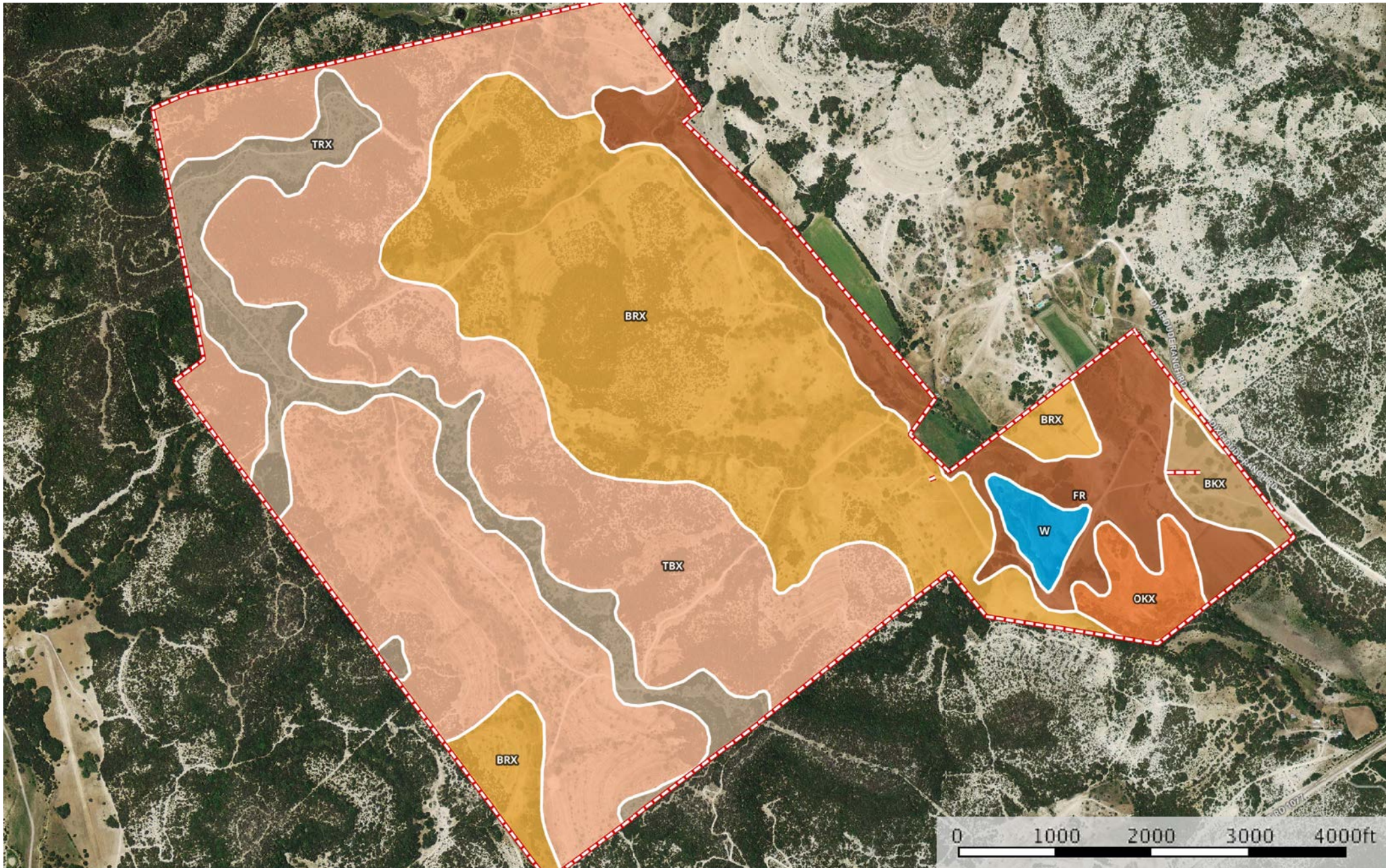



# 4L Ranch - soils

Bandera County, Texas, 922 AC +/-



 Boundary

|  Boundary 928.1 ac

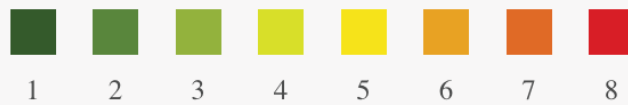
| SOIL CODE | SOIL DESCRIPTION  | ACRES | %     | CAP  |
|-----------|---|-------|-------|------|
| BKX       | Kerrville gravelly clay loam, 1 to 8 percent slopes         | 14.7  | 1.59  | -    |
| OKX       | Orif-Boerne association, frequently flooded                 | 18.6  | 2.01  | -    |
| W         | Water   | 10.3  | 1.11  | -    |
| BRX       | Kerrville-Rock outcrop association, 10 to 30 percent slopes | 300.4 | 32.37 | -    |
| FR        | Oakalla silty clay, occasionally flooded                    | 91.4  | 9.85  | 2w   |
| TRX       | Eckrant-Rock outcrop association, undulating                | 81.4  | 8.78  | 7s   |
| TBX       | Eckrant-Kerrville association, steep                        | 411.2 | 44.3  | 7s   |
| TOTALS    |   | 928.1 | 100%  | 3.91 |

### Capability Legend

Increased Limitations and Hazards

Decreased Adaptability and Freedom of Choice Users

Land, Capability  
Class(non-irrigated)



|              | 1 | 2 | 3 | 4 | 5 | 6 | 7 | 8 |
|--------------|---|---|---|---|---|---|---|---|
| 'Wild Life'  | • | • | • | • | • | • | • | • |
| Forestry     | • | • | • | • | • | • | • |   |
| Limited      | • | • | • | • | • | • | • |   |
| Moderate     | • | • | • | • | • | • |   |   |
| Intense      | • | • | • | • | • |   |   |   |
| Limited      | • | • | • | • |   |   |   |   |
| Moderate     | • | • | • |   |   |   |   |   |
| Intense      | • | • |   |   |   |   |   |   |
| Very Intense | • |   |   |   |   |   |   |   |

### Grazing Cultivation

(c) climatic limitations (e) susceptibility to erosion

(s) soil limitations within the rooting zone (w) excess of water